



PATAGONIA HOTEL TIERRA PATAGONIA

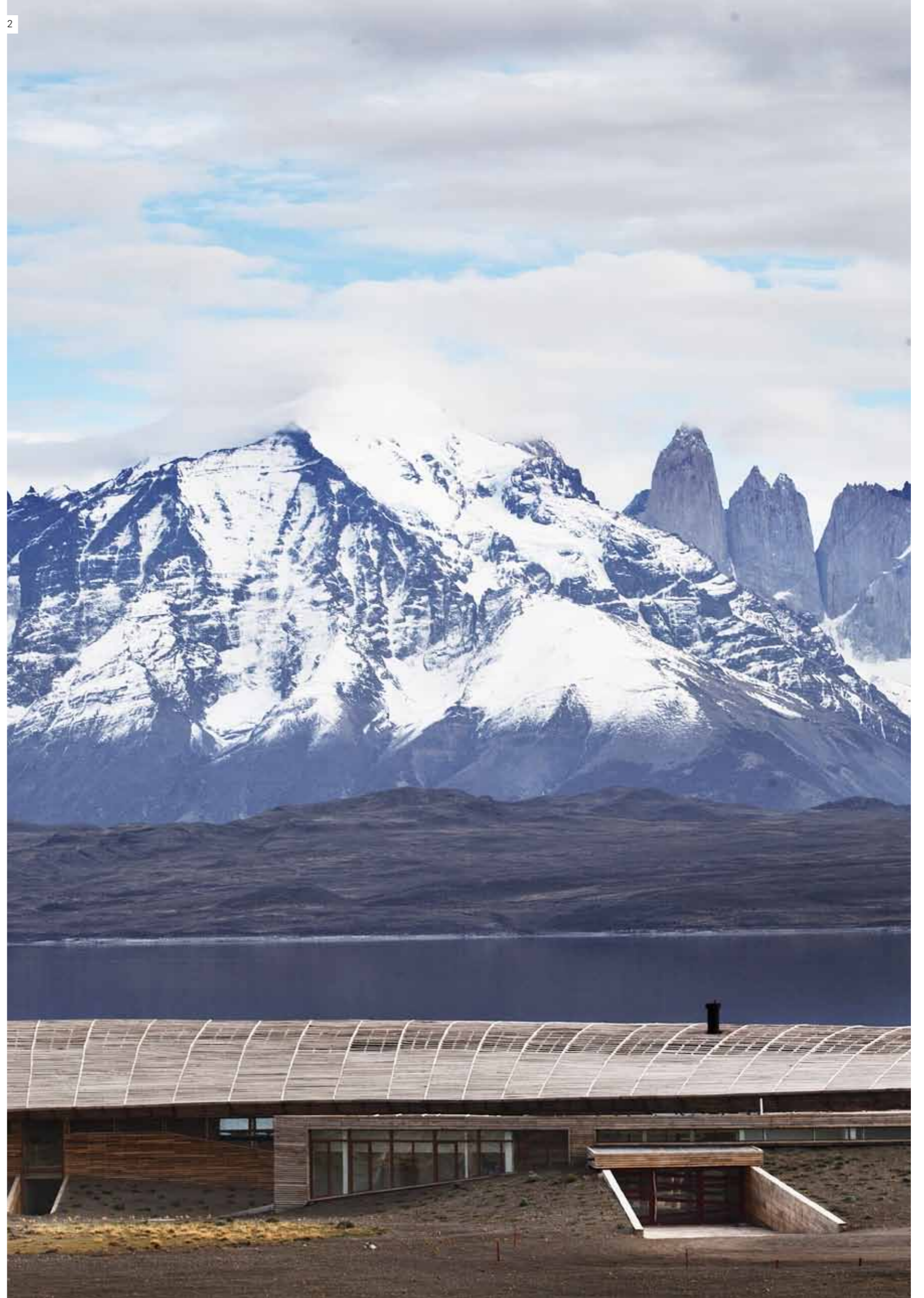
Documenting an imposing aura, this hotel is situated at the entrance to Torres del Paine National Park on the shore of Lake Sarmiento in Patagonia, Chile. The building's form fuses with the meta-physical countryside, creating a breathtaking symbiosis. It looks like the fossil of a prehistoric animal stranded on the lake's shore. The building, anchored to the ground with stone embankments, is clad in Lenga wood, giving it the appearance of a typical old wooden house.

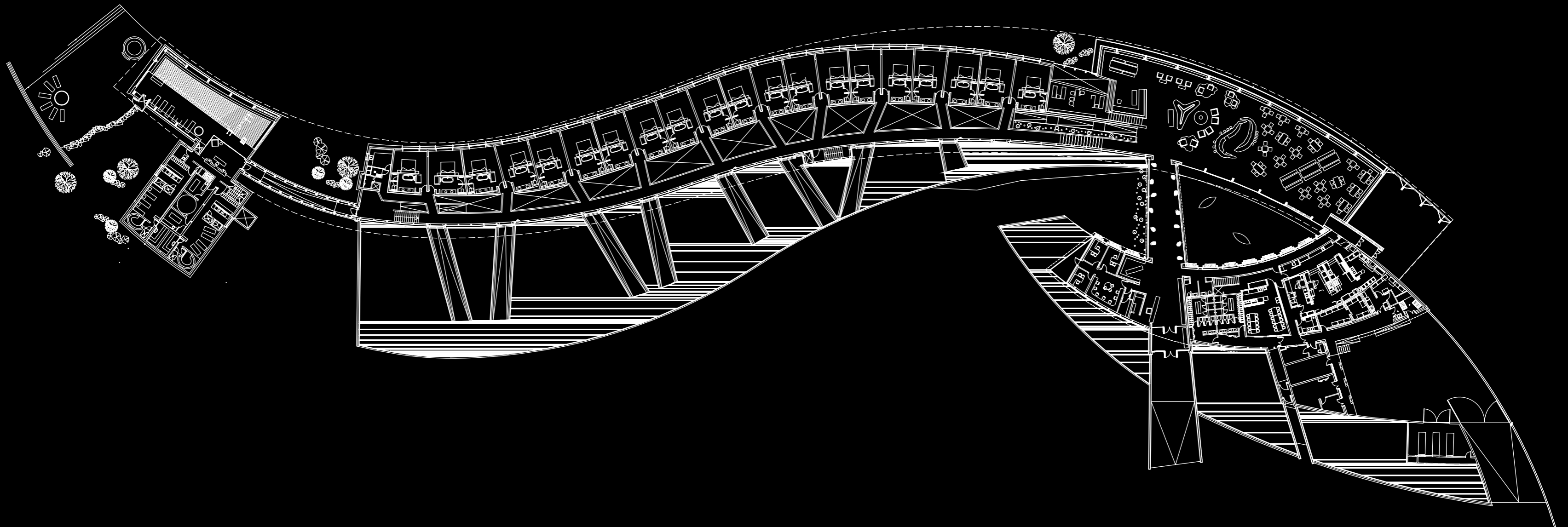
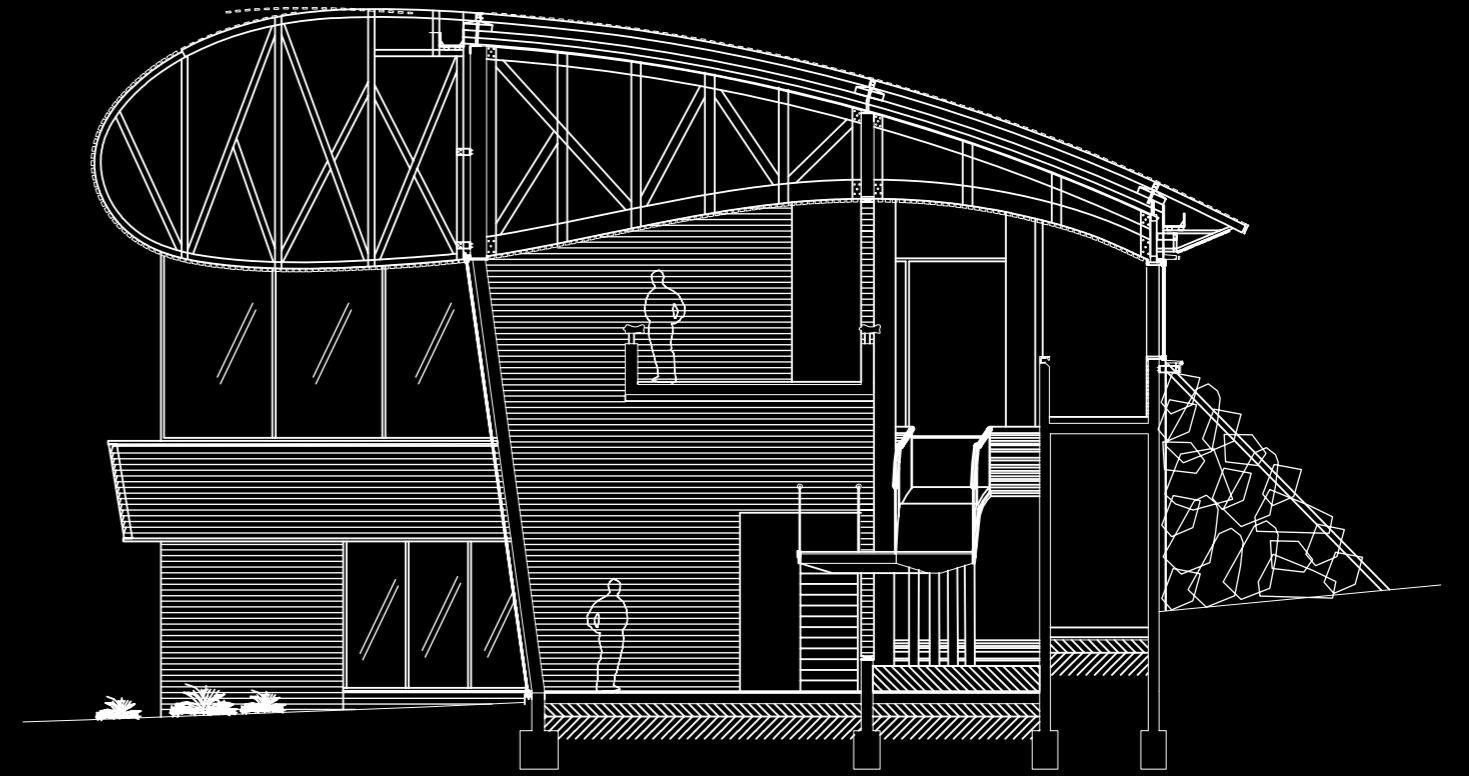
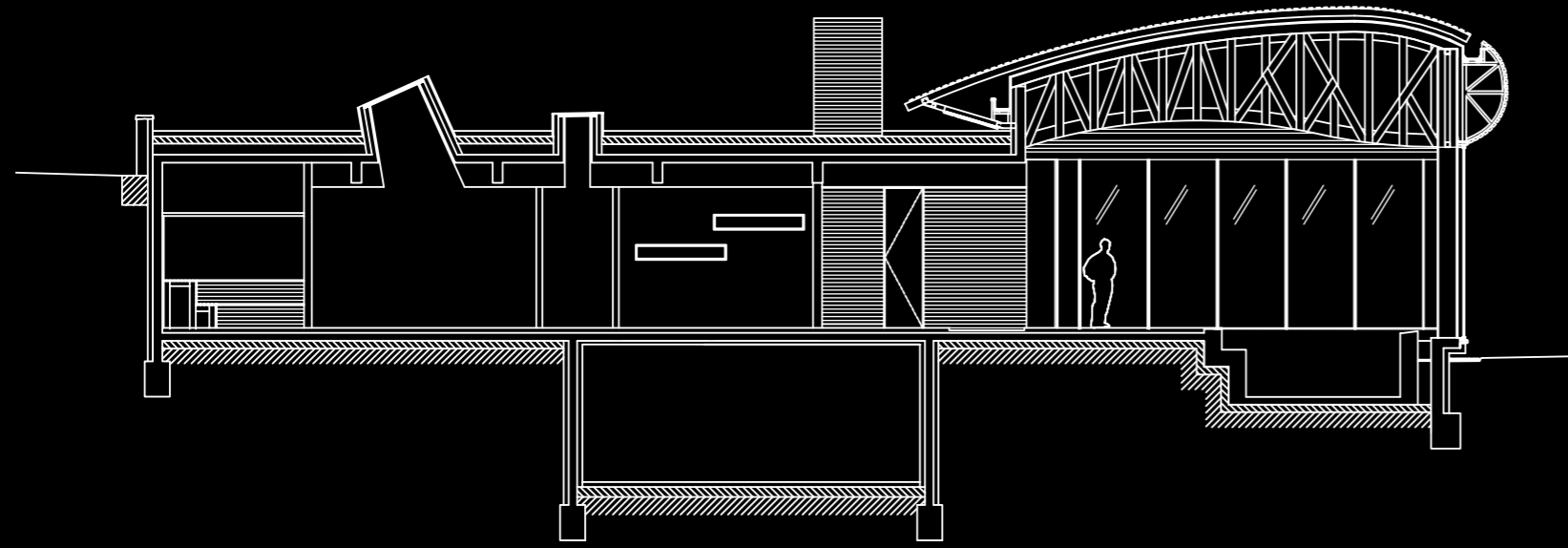
In harmony with nature, the hotel's interior concept continues in the bathrooms. Wooden panelling creates a union with the natural surroundings and a relaxing spa feeling. This aesthetic design is enhanced by GROHE Essence fittings for the washbasin.

1



2







6



- 1 The hotel is embedded in the countryside the way the island's residents are deeply rooted in the region's culture and traditions.
- 2 Influenced by the indigenous Tehuelche people, the hotel was built using natural materials from the region.
- 3 Situated on a bluff, the building looks like it rose from the earth.
- 4 Inside, wood-clad walls emanate warmth, safety, and protection, creating a casual ambience.
- 5 With its fluid profile, GROHE Essence correlates perfectly to the attractive washbasins.
- 6 The furniture and textiles, made by Chilean artisans, boast high-quality workmanship.

5



Cazú Zegers

Architect

Cazú Zegers Arquitectura
Vitacura, Santiago, Chile

Associated Architects

Rodrigo Ferrer
Roberto Benavente

Interior Design

Carolina del Piano
Alexandra Edwards

Address

Lago Sarmiento, Torres del
Paine, XII Región, Chile

Area used

4,990 m²